

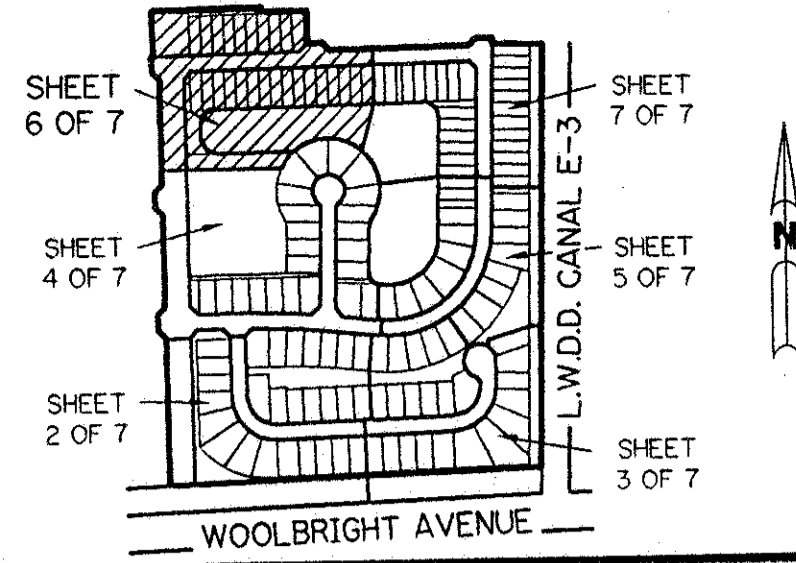
0627-001  
79  
91

A PLANNED UNIT DEVELOPMENT

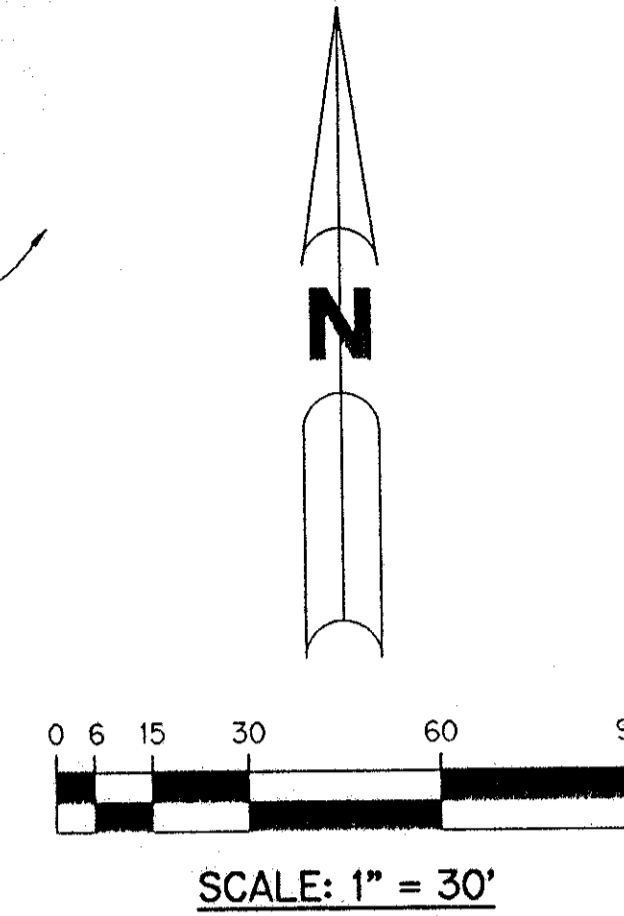
# MAJESTIC ISLES - PLAT ONE

BEING A REPLAT OF A PORTION OF TRACTS 33, 34, 35, 36, 37, 52, 53, AND 54 AND ASSOCIATED ABANDONED RIGHT-OF-WAY ACCORDING TO THE PLAT OF THE SUBDIVISION OF SECTION 26-45S-42E, AS RECORDED IN PLAT BOOK 6, PAGE 26, PUBLIC RECORDS OF PALM BEACH COUNTY, FLORIDA, LYING IN SECTION 26, TOWNSHIP 45 SOUTH, RANGE 42 EAST.

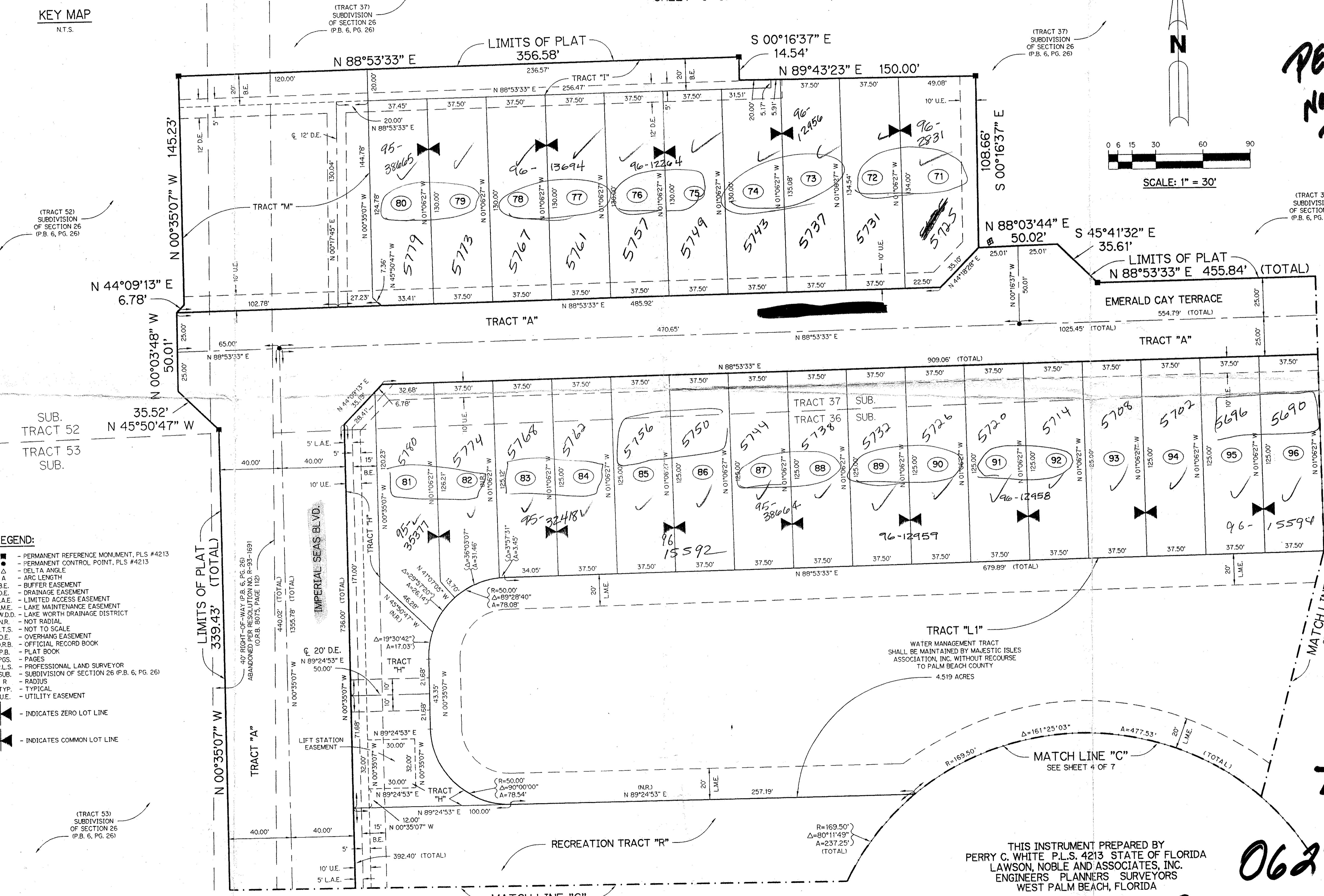
SHEET 6 OF 7 APRIL, 1994



KEY MAP  
N.T.S.



PET. 88-139B  
NO SCHOOLS  
RESTRICTIVE  
COVENANT  
5/3/3/K



- LEGEND:**
- - PERMANENT REFERENCE MONUMENT, P.L.S. #4213
  - ▲ - PERMANENT CONTROL POINT, P.L.S. #4213
  - Δ - DELTA ANGLE
  - A - ARC LENGTH
  - B.E. - BUFFER EASEMENT
  - D.E. - DRAINAGE EASEMENT
  - L.A.E. - LIMITED ACCESS EASEMENT
  - L.M.E. - LAKE MAINTENANCE EASEMENT
  - L.W.D.D. - LAKE WORTH DRAINAGE DISTRICT
  - N.R. - NOT RADIAL
  - N.T.S. - NOT TO SCALE
  - O.E. - OVERHANG EASEMENT
  - O.R.B. - OFFICIAL RECORD BOOK
  - P.B. - PLAT BOOK
  - P.G.S. - PAGES
  - P.L.S. - PROFESSIONAL LAND SURVEYOR
  - SUB. - SUBDIVISION OF SECTION 26 (P.B. 6, PG. 26)
  - R - RADIUS
  - TYP. - TYPICAL
  - U.E. - UTILITY EASEMENT
  - ▲— - INDICATES ZERO LOT LINE
  - X— - INDICATES COMMON LOT LINE

SUBDIVISION - Majestic Isles Plat One  
BOOK 74 PAGE 91  
FLOOD ZONE B  
ZONING K5  
SE 88-137  
PUD NAME same  
TAX-448

THIS INSTRUMENT PREPARED BY  
PERRY C. WHITE, P.L.S. 4213, STATE OF FLORIDA  
LAWSON, NOBLE AND ASSOCIATES, INC.  
ENGINEERS PLANNERS SURVEYORS  
WEST PALM BEACH, FLORIDA

## MAJESTIC ISLES - PLAT ONE

# 0627-001

74/91